

Ascend

YOUR LIFESTYLE

Wake up daily to inspiring outlook across open park land and hilly vistas. Take your work to the **Co-working space** with charming environment for a productivity boost.

Indulge in a healthy balance of social and physical activities at Gaia Residences, with the **Sky Garden** on the rooftop, while the facility deck houses the indoor and outdoor **Gym, Pool, BBQ Deck** and **Multipurpose Hall**.



Swimming Pool
Artist's impression only



Co-working Space
Artist's impression only



GAIA Boulevard
Artist's impression only

FACILITY DECK

- | | | | | |
|---------------------|---------------------|----------------------|---------------------|---------------------------|
| 1 Lazy River | 4 Swimming Pool | 7 Multipurpose Court | 10 Aromatic Gardens | 13 Co-working Cafe |
| 2 Multipurpose Hall | 5 Beach Pool | 8 Playground | 11 Jogging Track | 14 Family-oriented Cafe |
| 3 Gymnasium | 6 Outdoor Gymnasium | 9 BBQ Area | 12 Canopy Walk | 15 Sky Gardens (Level 13) |



Level 5 Facility Deck
Artist's impression only

SPACE Reimagined

SPACES DESIGNED FOR THE MODERN CITY

The furnished package and smart home system options make moving into your new home effortless, so you have more time to spend on making new memories in Gaia Residences.



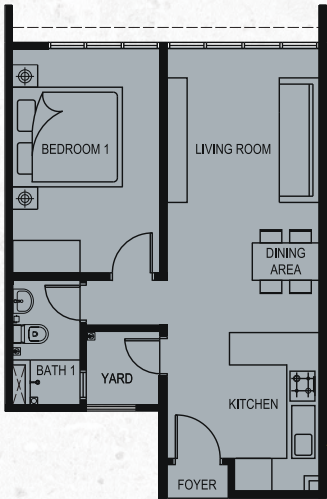
TYPE B
Actual Show Unit

FLOOR LAYOUT



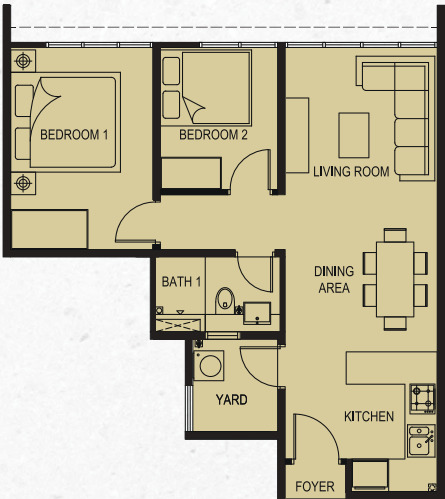
TYPE A
550 SQ.Ft.

1 Bedroom
1 Bathroom



TYPE B
640 SQ.Ft.

2 Bedrooms
1 Bathroom



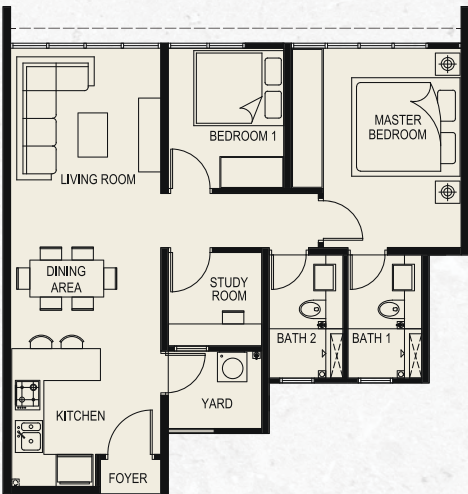
TYPE B1
660 SQ.Ft.

2 Bedrooms
1 Bathroom



TYPE C
750 SQ.Ft.

2 Bedrooms
2 Bathrooms
1 Study Room



SPECIFICATIONS

- (a) Structure : Reinforced Concrete
- (b) Wall : Brickwork / Reinforced Concrete
- (c) Ceiling : Plasterboard & Paint / Skim Coat & Paint
- (d) Floor Finishes : Tiles
- (e) Wall Finishes : Skim Coat / Plaster & Paint / Tiles
- (f) Windows : Metal Framed Glass Window
- (g) Doors : Fire Rated Door / Timber Flush Door
- (h) Ironmongery : Quality Lockset

(i) Sanitary Fittings					
	A / AA	B / BB	B1	B2	C / CC
Single Bowl Kitchen Sink	1 no.	1 no.	1 no.	1 no.	1 no.
Wash Basin	1 no.	1 no.	1 no.	1 no.	2 nos.
Shower Rose	1 no.	1 no.	1 no.	1 no.	2 nos.
Toilet Roll Holder	1 no.	1 no.	1 no.	1 no.	2 nos.
Water Closet	1 no.	1 no.	1 no.	1 no.	2 nos.
Bib tap	2 nos.	2 nos.	2 nos.	2 nos.	3 nos.
(j) Electrical Fittings					
	A / AA	B / BB	B1	B2	C / CC
Lighting Point	7 nos.	9 nos.	9 nos.	9 nos.	11 nos.
Power Point, 13A	9 nos.	11 nos.	10 nos.	10 nos.	12 nos.
Electrical Hob Point	1 no.	1 no.	1 no.	1 no.	1 no.
Electrical Hood Point	1 no.	1 no.	1 no.	1 no.	1 no.
Fibre Wall Socket	1 no.	1 no.	1 no.	1 no.	1 no.
Air-Cond Point	2 nos.	3 nos.	3 nos.	3 nos.	3 nos.
Ceiling Fan Point	2 nos.	3 nos.	3 nos.	3 nos.	3 nos.
Wall Fan Point	-	-	-	-	1 no.
Water Heater Point	1 no.	1 no.	1 no.	1 no.	2 nos.
SMATV Point	1 no.	1 no.	1 no.	1 no.	1 no.
Distribution Panel	1 no.	1 no.	1 no.	1 no.	1 no.